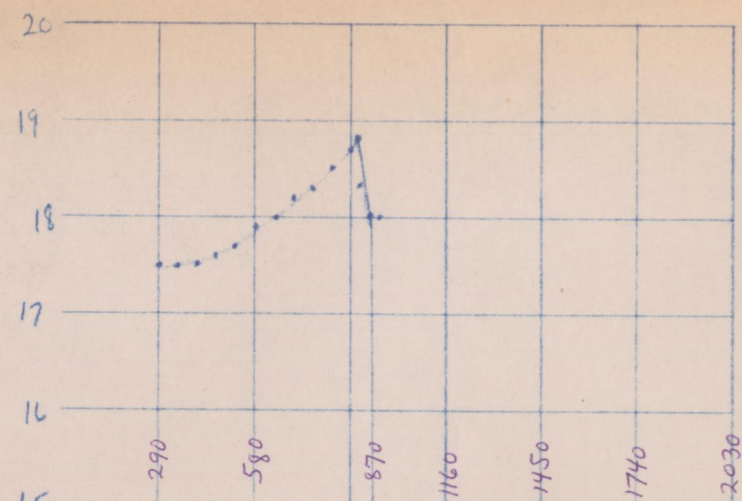
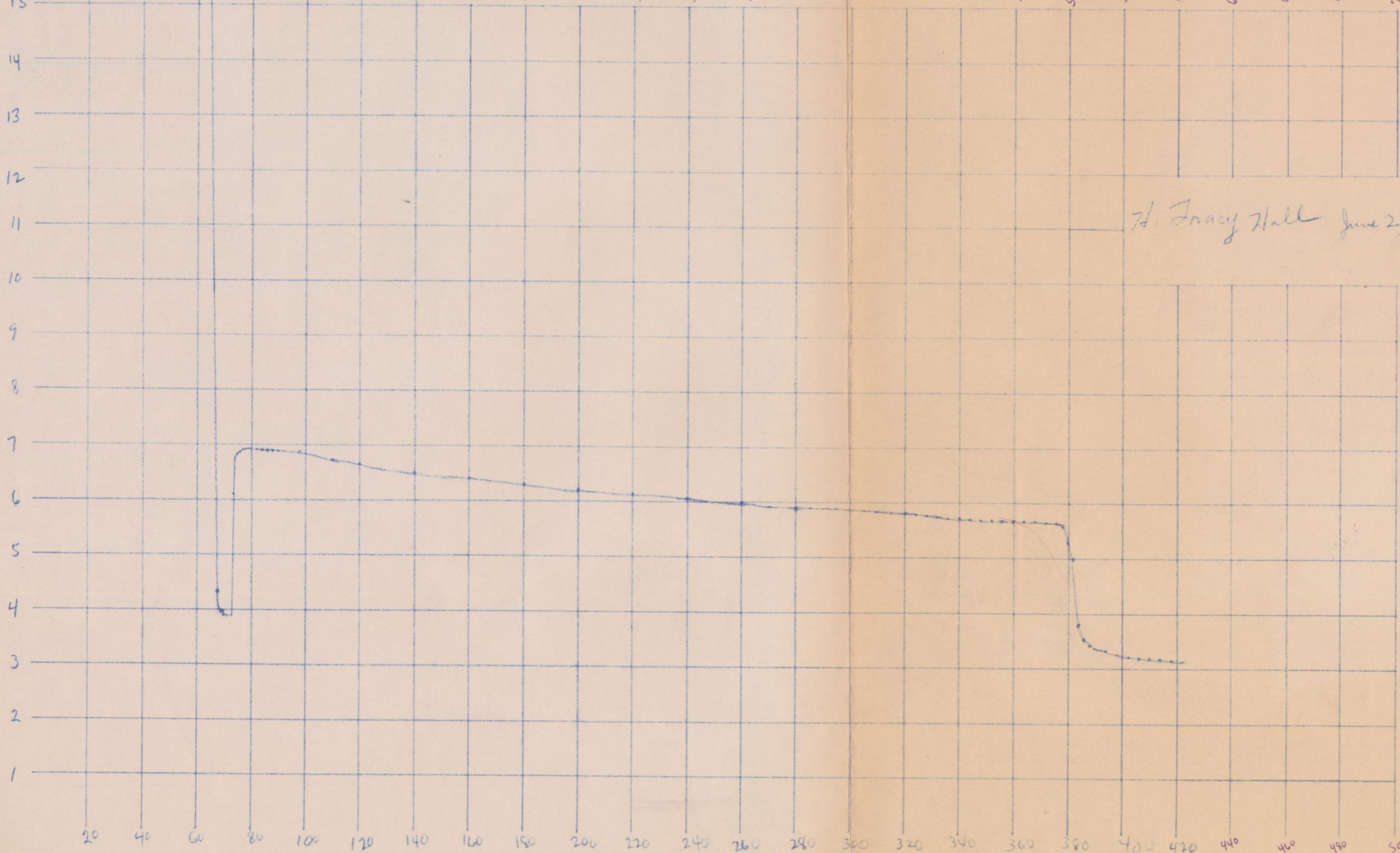


Pressure Test - Tetrahedral X-ray Diffraction Press

Bismuth electrical resistance vs. pressure run. June 2, 1964, Baxter Springs, Kansas. One-half inch carbide anvils; 3/4 inch pyrophyllite tetrahedron; painted with Fe_2O_3 ; baked 1 hour at $100^\circ C$ after assembly - Bi wire embedded in AgCl.



Bi res. milliohm



← oil pressure, psi

H. Tracy Hall June 2, 1964

1 bar = 14.504 psi = 0.98692 atm

Load for this transition (89 kbar Bi) is high. It usually comes at 4975 ± 25 psi oil pressure.

oil pressure, bars